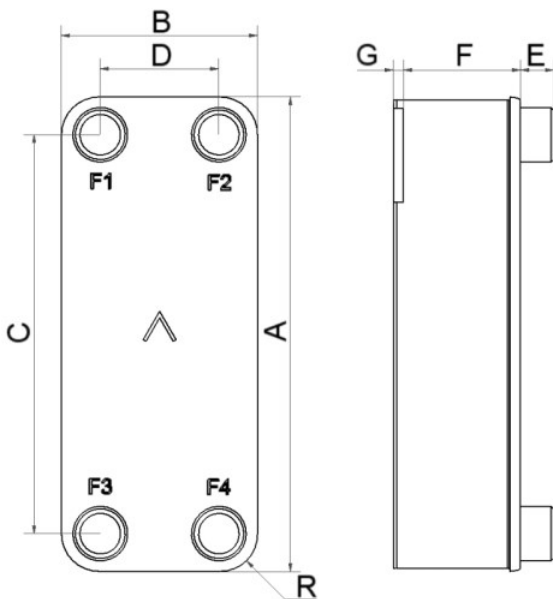


# SWEP P65

P65 è un prodotto efficiente sviluppato per le applicazioni di refrigerazione ad alta capacità, in particolare la vaporizzazione del gas e la refrigerazione avanzata.



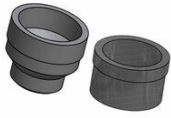
m<sup>3</sup>/h



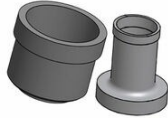
#	MM	IN
	864	34.02
	363	14.29
	731	28.78
	231	9.09
	17,00+2,32*(NoP)	0.67+0.09 *(NoP)
	0.50	0.02
	67	2.64
	54	2.13
	112	4.41



Connessione a filettare



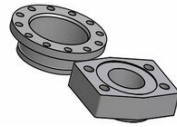
Victaulic



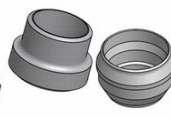
Connessione a saldare/ brasare



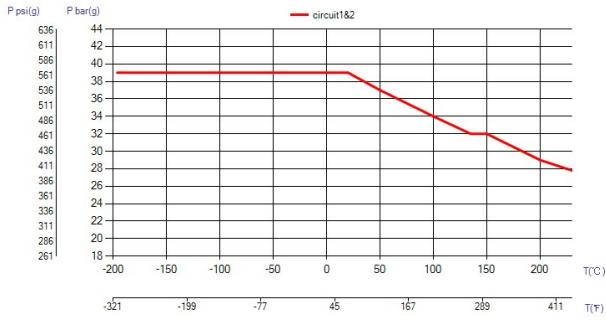
Connessione combinata



Connessione flangiata



Connessione a saldare



## UL Tryck/Temperatur

