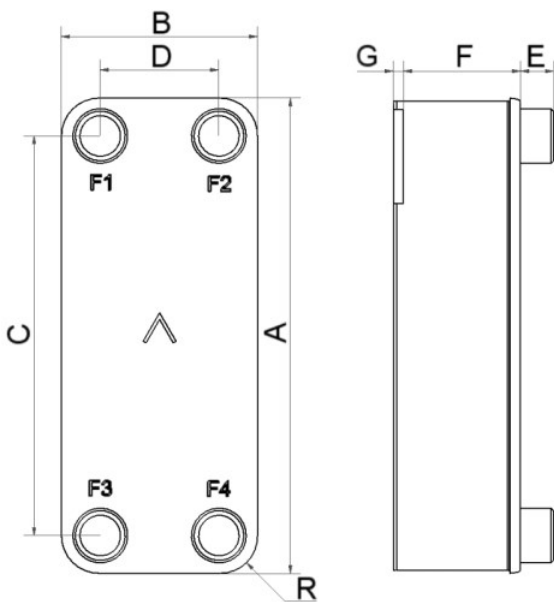


SWEP 8DW

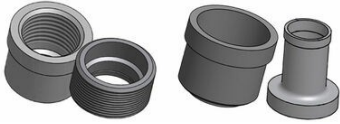
The B8DW is our most compact double-wall unit optimized for small to medium capacities, designed for applications requiring leak protection and improved leak detection. The B8DW offers high thermal length suitable for heat recovery and tap water heating where tight temperature approach and low return temperature is a requirement. The design offers the same compactness and thermal performance as other SWEP BPHEs.



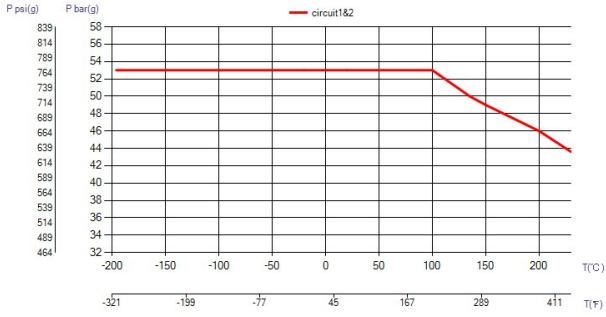
Maximum number of plates (NoP)	70
Max flow	4 m ³ /h (17.61 gpm)
Channel volume	0.0166/0.0169 dm ³ (0.0006/0.0006 ft ³)
Material	316/316L stainless steel plates, copper brazing
Weight excl. connections	0.84+(0.118*NoP) kg 1.85+(0.260*NoP) lb
Max Particle Size (mm)	0.6



#	MM	IN
A	318	12.52
B	76.50	3.01
C	278	10.94
D	40	1.57
F	4,00+1,57*(NoP)	0.16+0.06 *(NoP)
G	5.60	0.22
R	18	0.71
E_1	20	0.79
E_2	45	1.77



Threaded Connection Solder Connection



UL Tryck/Temperatur

