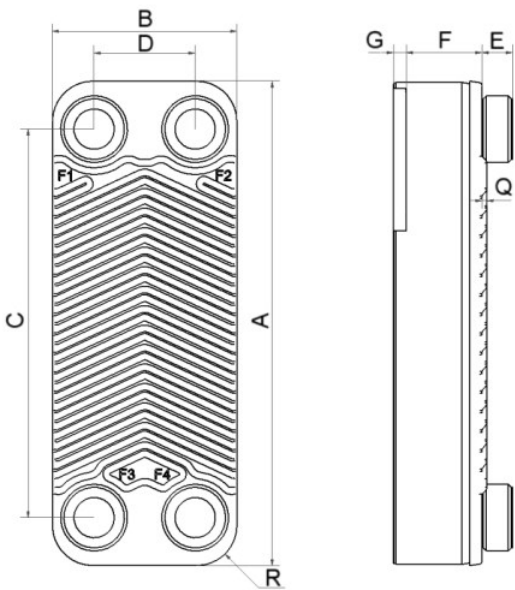


SWEP BX3T

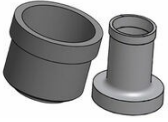
The BX3T enables a new level of efficient heat exchange, with the Active-plates on front and back that give structural stability while being active heat transfer plates. This All-Active plate pack maximizes the material utilization and makes the product an efficient and competitive product for demanding applications and narrow temperature approaches. Easy to install and use, the product is small yet flexible, which makes it a particularly good choice for economizer applications focusing on VRF and heat pumps. The BX3T's mechanical design makes it suitable for high pressure refrigerants such as R410A and R32.



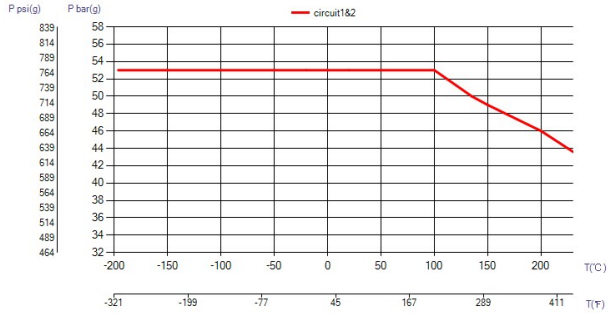
Maximum number of plates (NoP)	60
Max flow	2.2 m ³ /h (9.69 gpm)
Channel volume	0.0052/0.0052 dm ³ (0.0002/0.0002 ft ³)
Material	304 Stainless Steel Plates, Copper Brazing
Weight excl. connections	0.11+(0.016*NoP) kg 0.24+(0.035*NoP) lb
Max Particle Size (mm)	0.5



#	MM	IN
A	119.50	4.7
B	54.40	2.14
C	91	3.58
D	26	1.02
F	2,00+(1,22*(NoP-2,00))	0.08 (NaN*(NoP-0.08))
G	6	0.24
R	15	0.59
E_1	12	0.47
E_2	12	0.47



Solder Connection



UL Tryck/Temperatur

