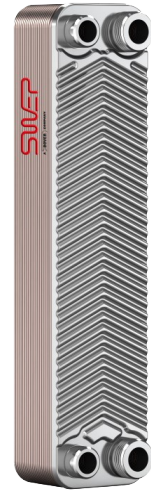
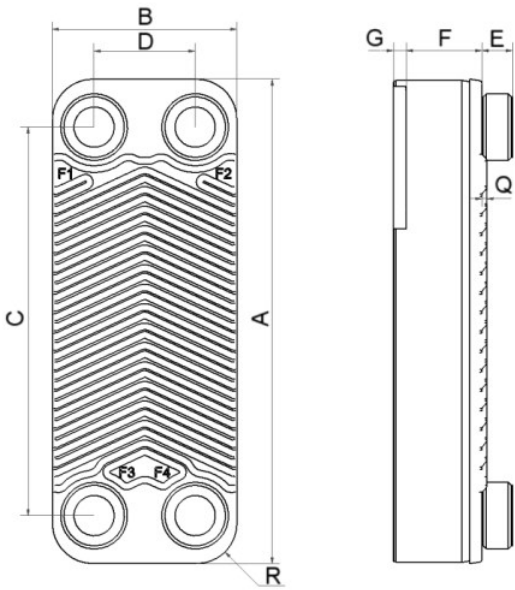


SWEP E8T

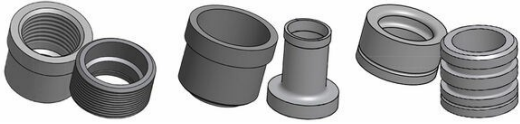
The versatile and very compact E8T delivers improved heat transfer for the majority of wall-hung, non-condensing boiler applications. The E8T has an All-Active plate pack with front and back plates that give mechanical stability while remaining active heat transfer plates. This enables the E8T to transfer more heat using less material.



Maximum number of plates (NoP)	40
Max flow	4 m ³ /h (17.61 gpm)
Channel volume	0.039/0.039 dm ³ (0.0014/0.0014 ft ³)
Material	316/316L stainless steel plates, copper brazing
Weight excl. connections	0.49+(0.075*NoP) kg 1.07+(0.165*NoP) lb
Max Particle Size (mm)	1



#	MM	IN
A	315	12.4
B	73	2.87
C	278	10.94
D	40	1.57
E_1	12	0.47
E_2	20	0.79
F	2+(2.24*(NoP-2))	0.08 (0.08*(NoP-0.08))
G	7	0.28
Q	2	0.08
R	16	0.63



Threaded Connection Solder Connection O-Ring Connection

