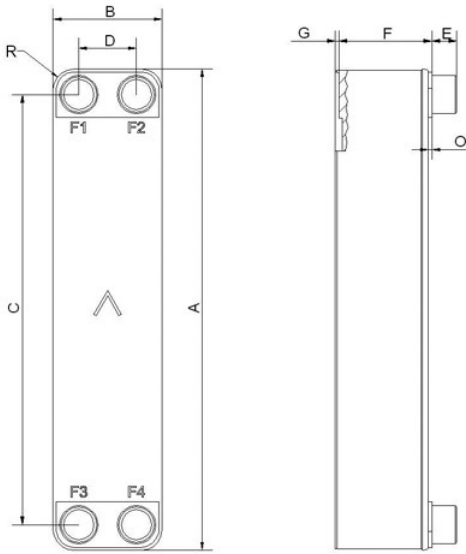


SWEP QA80

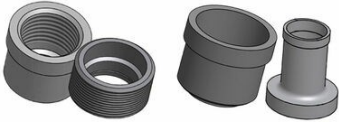
The QA80 evaporator is optimized for heat pump systems using refrigerants. The injection system is fully integrated with the evaporator, thereby eliminating any additional assembly operations. The QA80 can be used with all commercially available system components and uses the most modern and efficient design on the market. It is available in a wide number of plate sizes.



Maximum number of plates (NoP)	90
Max flow	16.9 m ³ /h (74.41 gpm)
Channel volume	0.107/0.107 dm ³ (0.0038/0.0038 ft ³)
Material	316/316L stainless steel plates, copper brazing
Weight excl. connections	2.10+(0.17*NoP) kg 4.64+(0.375*NoP) lb
Max Particle Size (mm)	1



#	MM	IN
A	526	20.71
B	119	4.69
C	470	18.5
D	63	2.48
E_1	27	1.06
E_2	45	1.77
F	4+2.24*(NoP)	0.16+0.09 *(NoP)
G	6	0.24
R	23	0.91



Threaded Connection Solder Connection

