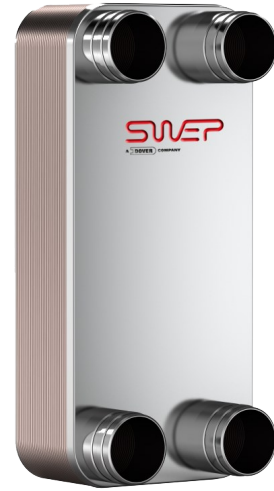
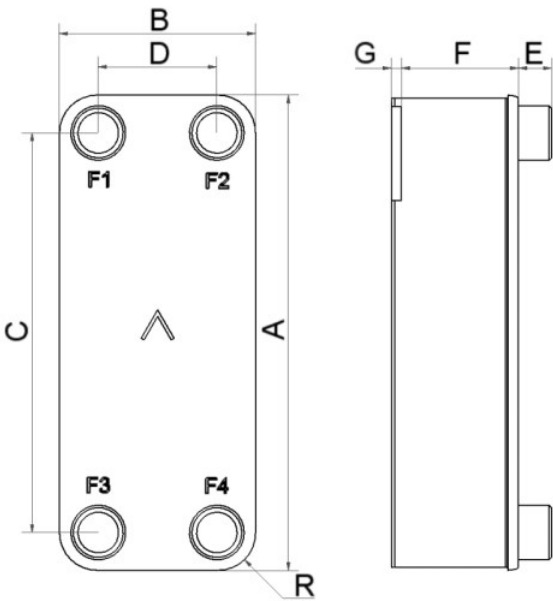


SWEP B56

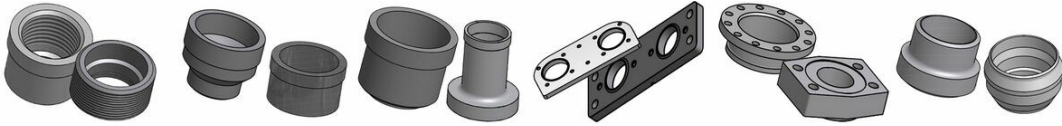
The B56 is specially adapted to offer efficient heat transfer in heating and industrial applications. Equipped with our patented AsyMatrix® technology it offers a versatile fit especially for district heating- and oil cooling applications.



Maximum number of plates (NoP)	280
Max flow	76.2 m³/h (335.50 gpm)
Channel volume	0.21/0.297 dm³ (0.0074/0.0105 ft³)
Material	316/316L stainless steel plates, copper brazing
Weight excl. connections	12.96+(0.419*NoP) kg 28.56+(0.924*NoP) lb
Max Particle Size (mm)	1



#	MM	IN
A	525	20.67
B	243	9.57
C	430	16.93
D	148	5.83
E_1	54	2.13
E_2	81	3.19
F	14+2.44*(NoP)	0.55+0.1 *(NoP)
G	2.5	0.1
R	48	1.89



Threaded Connection Victaulic Connection Solder Connection Connection Plate Flange Connection Weld Connection

