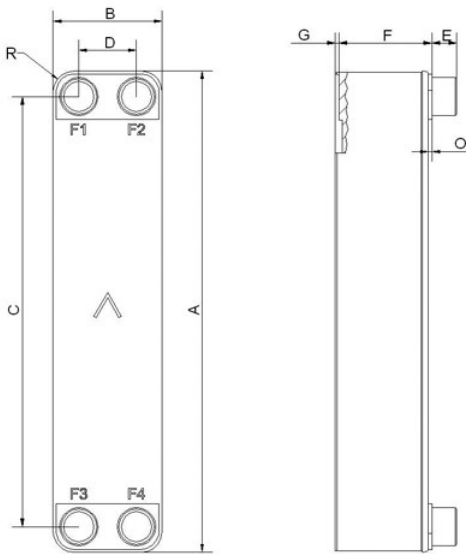


# SWEP P80

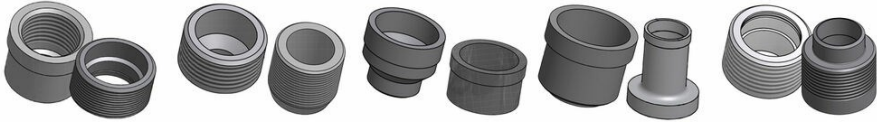
The P80 is designed as an evaporator using refrigerants. The optimization delivers a significant increase in heat flux, saving energy and giving impressive efficiency gains for chiller systems.



<b>Maximum number of plates (NoP)</b>	140
<b>Max flow</b>	16.9 m <sup>3</sup> /h (74.41 gpm)
<b>Channel volume</b>	0.107/0.107 dm <sup>3</sup> (0.0038/0.0038 ft <sup>3</sup> )
<b>Material</b>	316/316L stainless steel plates, copper brazing
<b>Weight excl. connections</b>	2.09+(0.194*NoP) kg 4.61+(0.428*NoP) lb
<b>Max Particle Size (mm)</b>	1



#	MM	IN
A	526	20.71
B	119	4.69
C	470	18.5
D	63	2.48
E_1	27	1.06
E_2	45	1.77
F	4+2.24*(NoP)	0.16+0.09 *(NoP)
G	6	0.24
R	23	0.91



Threaded Connection   Threaded Ultra High Approved   Victaulic Connection   Solder Connection   Combo Connection

