

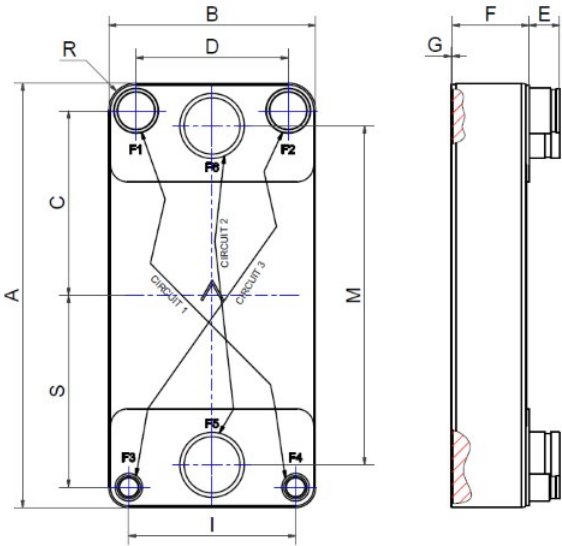
SWEP DBD650

The DBD650 is a highly effective, versatile true dual that is a natural choice as condenser for chiller, heat pump and single-phase applications. The true dual design means excellent performance at both full and partial load. The product is approved for pressures of up to 61 bar (885 psi), so it can be used with the majority of current high pressure refrigerants, enabling our customers to use the compressor's whole envelope.

The DB650 is a highly effective, versatile true dual that is a natural choice as condenser for chiller, heat pump and single-phase applications. The true dual design means excellent performance at both full and partial load. The product is approved for pressures of up to 49 bar (710 psi), so it can be used with the majority of current high pressure refrigerants, enabling our customers to use the compressor's whole envelope.



Maximum number of plates (NoP)	346
Max flow	140 m ³ /h (616.40 gpm)
Channel volume	0.496/0.585 dm ³ (0.0175/0.0207 ft ³)
Material	316/316L stainless steel plates, copper brazing
Weight excl. connections	14.59+(0.939*NoP) kg 32.16+(2.070*NoP) lb
Max Particle Size (mm)	1



#	MM	IN
A	744.6	29.31
B	365.6	14.39
C	324	12.76
D	269	10.59
E_1	54	2.13
F	14+2.43*(NoP)	0.55+0.1 *(NoP)
G	2	0.08
I	295	11.61
M	595	23.43
O	6	0.24
S	337	13.27



Threaded Connection Victaulic Connection Solder Connection Flange Connection Weld Connection

