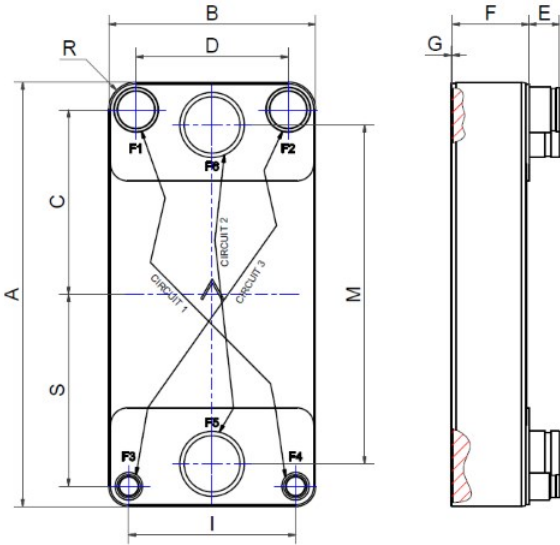


# SWEP DFXD650

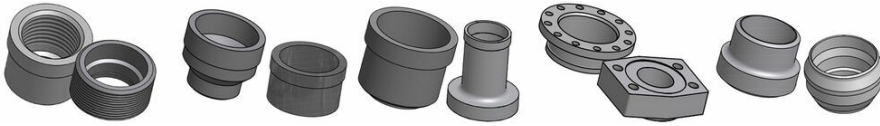
The DFXD650 is a highly effective, versatile true dual that is a natural choice as evaporator for chiller- and heat pump applications. DFX650 offer maximum performance for applications targeting low to medium temperature approach. The true dual design means excellent performance at both full and partial load. The product is approved for pressures of up to 61 bar (885 psi), so it can be used with the majority of current high-pressure refrigerants, enabling our customers to use the compressor's whole envelope.



<b>Maximum number of plates (NoP)</b>	346
<b>Max flow</b>	140 m <sup>3</sup> /h (616.40 gpm)
<b>Channel volume</b>	0.496/0.585 dm <sup>3</sup> (0.0175/0.0207 ft <sup>3</sup> )
<b>Material</b>	316/316L stainless steel plates, copper brazing
<b>Weight excl. connections</b>	14.59+(0.9533*NoP) kg 32.16+(2.102*NoP) lb
<b>Max Particle Size (mm)</b>	1



#	MM	IN
A	744.6	29.31
B	365.6	14.39
C	324	12.76
D	269	10.59
E_1	54	2.13
F	14+2.43*(NoP)	0.55+0.1 *(NoP)
G	2	0.08
I	295	11.61
M	595	23.43
R	34	1.34
S	337	13.27



Threaded Connection    Victaulic Connection    Solder Connection    Flange Connection    Weld Connection

